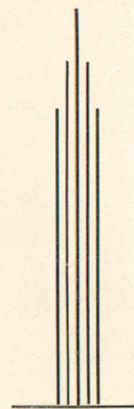


Picturesque
SARNIA



The
Tunnel
City

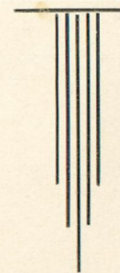


Photographs

by

W. A. COUSE

Publisher



SARNIA is a natural resort for summer tourists and a most desirable place in which to live the year round; situated at the foot of Lake Huron, the most beautiful expanse of water of the chain of great lakes, at the head of the St. Clair river, whose clear blue stream flows majestically past the town's front, and on whose bosom floats the immense freighters and palatial passenger steamers that ply the inland seas, furnishing a magnificent panorama unequalled anywhere. Sarnia is also a natural commercial centre, its advantageous position making it *par excellence* the distributing point of Canada, situated as it is mid-way between the coal fields of the south and the ore mines of the north, while its unequalled rail and water facilities make it a point most desirable for the location of large manufactories. The object of this booklet is to show in a graphic and realistic manner the advantages above described, each and every view having been taken from life exactly as it has been lived in this beautiful and attractive town, and true to nature. That it will commend itself to all as filling the object of its existence, the compiler has no doubt. The work is done in the highest style of the art and will be found most complete, illustrative of the town as it is at the beginning of the 20th century. Within its beautiful folds will be found most excellent views of the river front and lake shore, its splendid line of hotels, which are fitted up with all modern conveniences and up-to-date appointments, public buildings, comprising a very creditable town hall, a hospital second to none in the country, a new Government building—the finest of its class in the Dominion—skating rink, Boys' Brigade hall, court house, etc. The churches

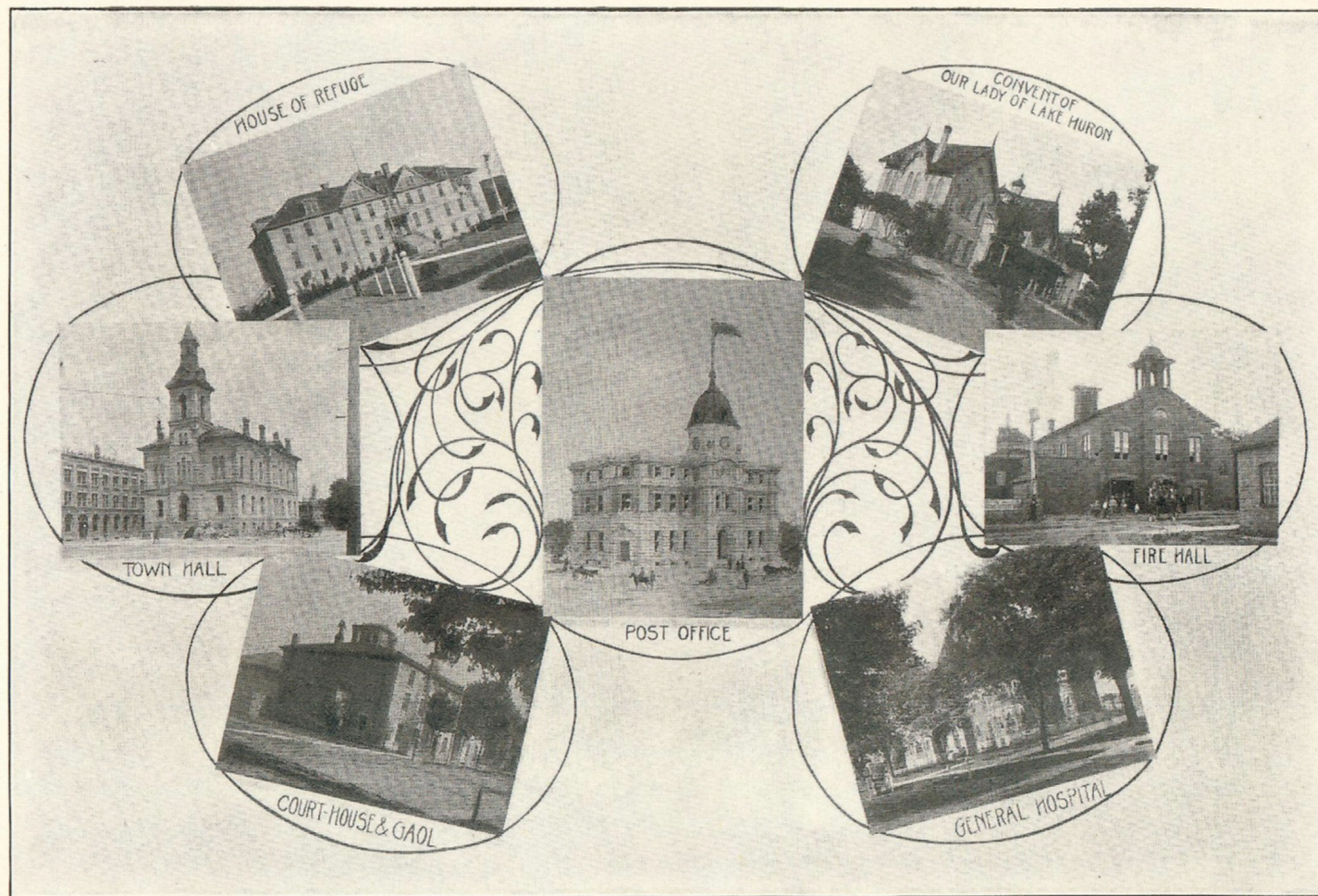
of Sarnia, some ten in number, will bear comparison with those of any town of its size in Canada, and would do credit to many a large city. The schools of the town are fine substantial structures, the Collegiate Institute being the most imposing of the group, while for efficiency they are unexcelled anywhere. Sarnia also has many handsome residences, the owners of which take great pride in maintaining the beauty of their surroundings. One of the finest and best equipped electric systems on the continent runs the entire length of the town, through to Point Edward and the beaches, furnishing a most acceptable service. Here is the great St. Clair tunnel located, the headquarters of the immense oil refining industry of Canada, the location of some of the largest lumber mills of the continent, manufactories of farm machinery and machinery for all classes of work, stove works, the largest can-making industry in Canada, and other immense works. The beaches form the most delightful summer resort in the world, the sunset as seen only from these shores furnishing a most awe-inspiring picture. Hotels and cottages dot the shores of our beautiful lake and river, which are easily reached by electric and steam railways and steamers. For a verification of the claims made in the foregoing it is only necessary to examine the beautiful photogravure reproductions in this book and compare them with the natural objects themselves.



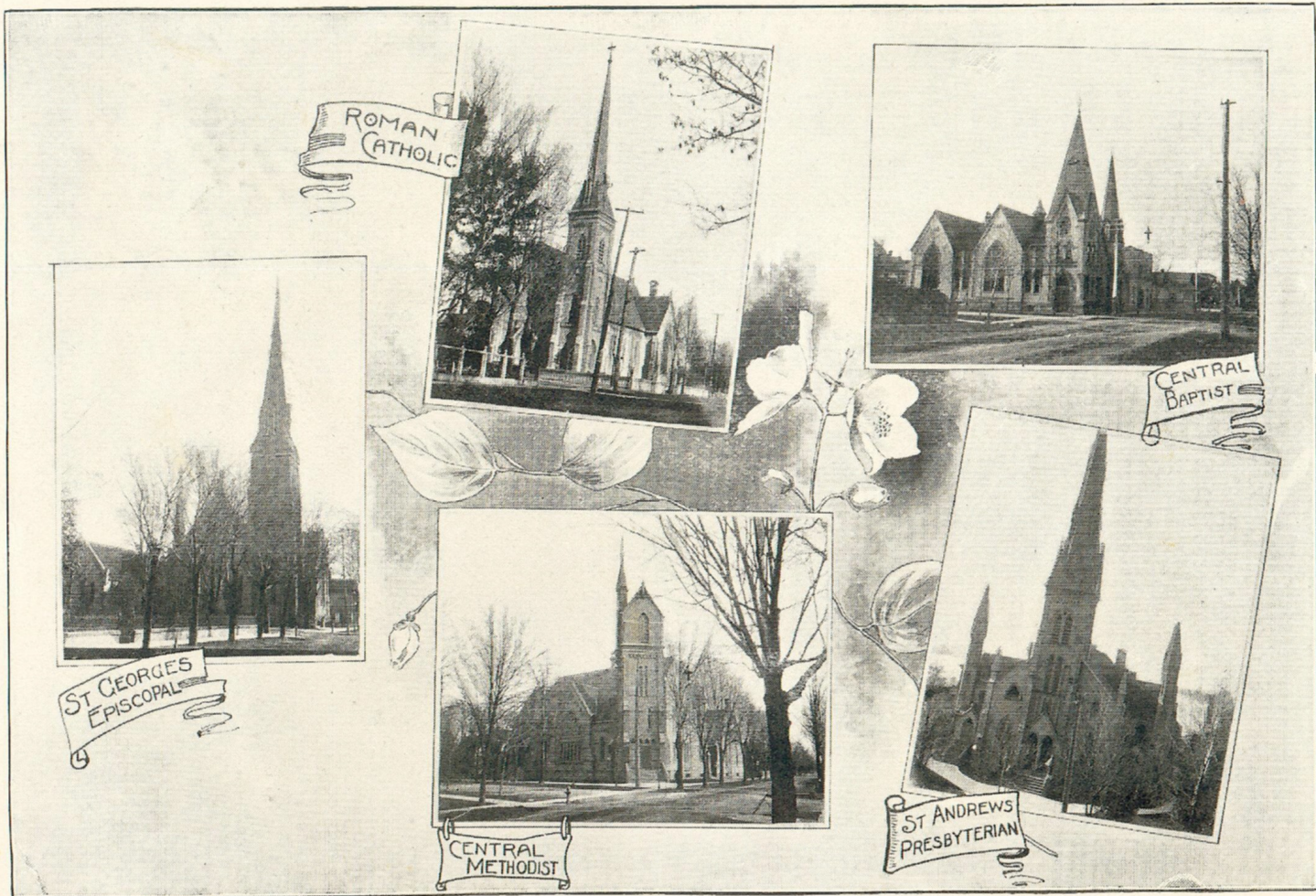
SARNIA, FROM G.T.R. ELEVATOR



GROUP OF HOTELS



GROUP OF PUBLIC BUILDINGS



ROMAN
CATHOLIC

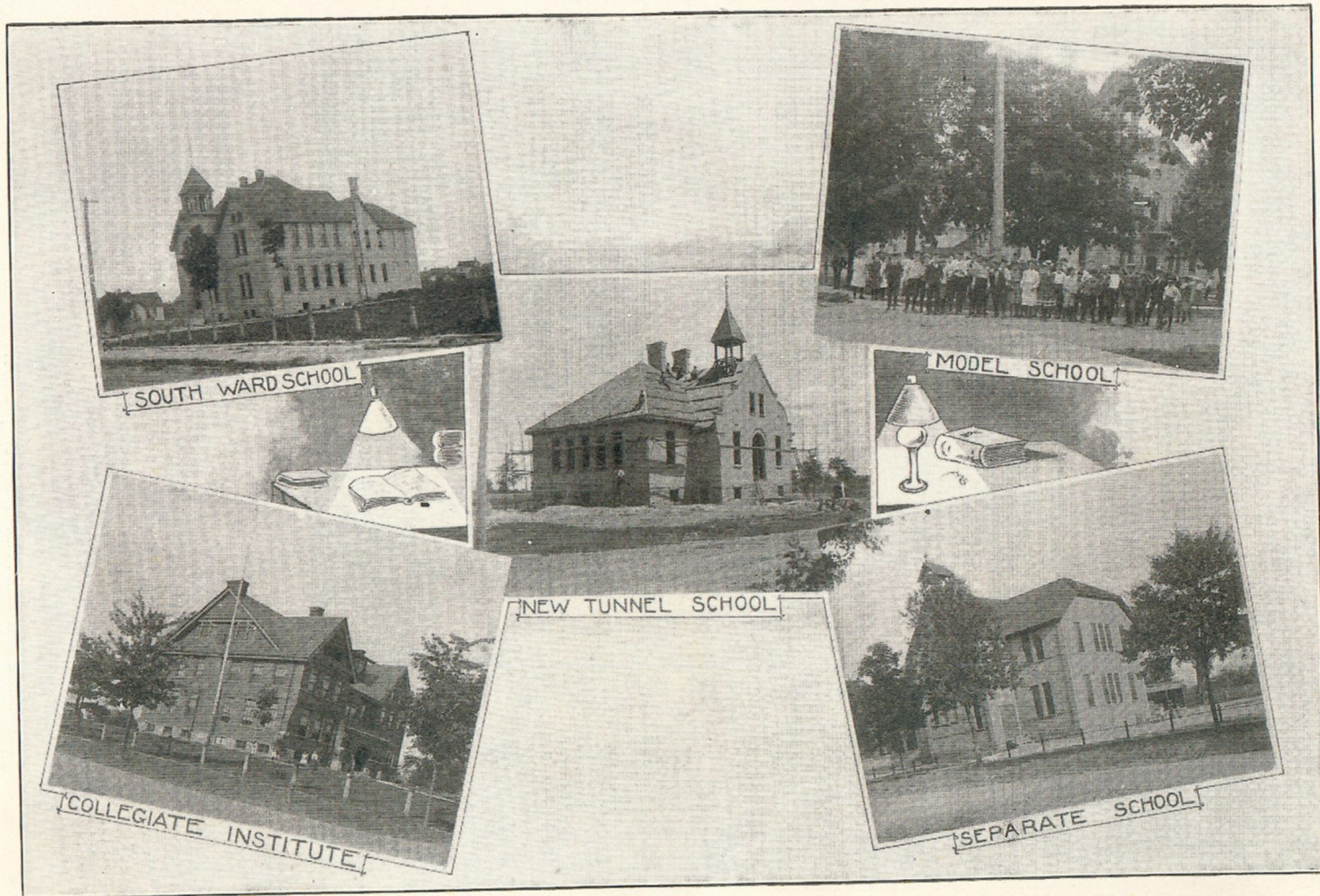
CENTRAL
BAPTIST

ST GEORGES
EPISCOPAL

CENTRAL
METHODIST

ST ANDREWS
PRESBYTERIAN

THE PRINCIPAL CHURCHES



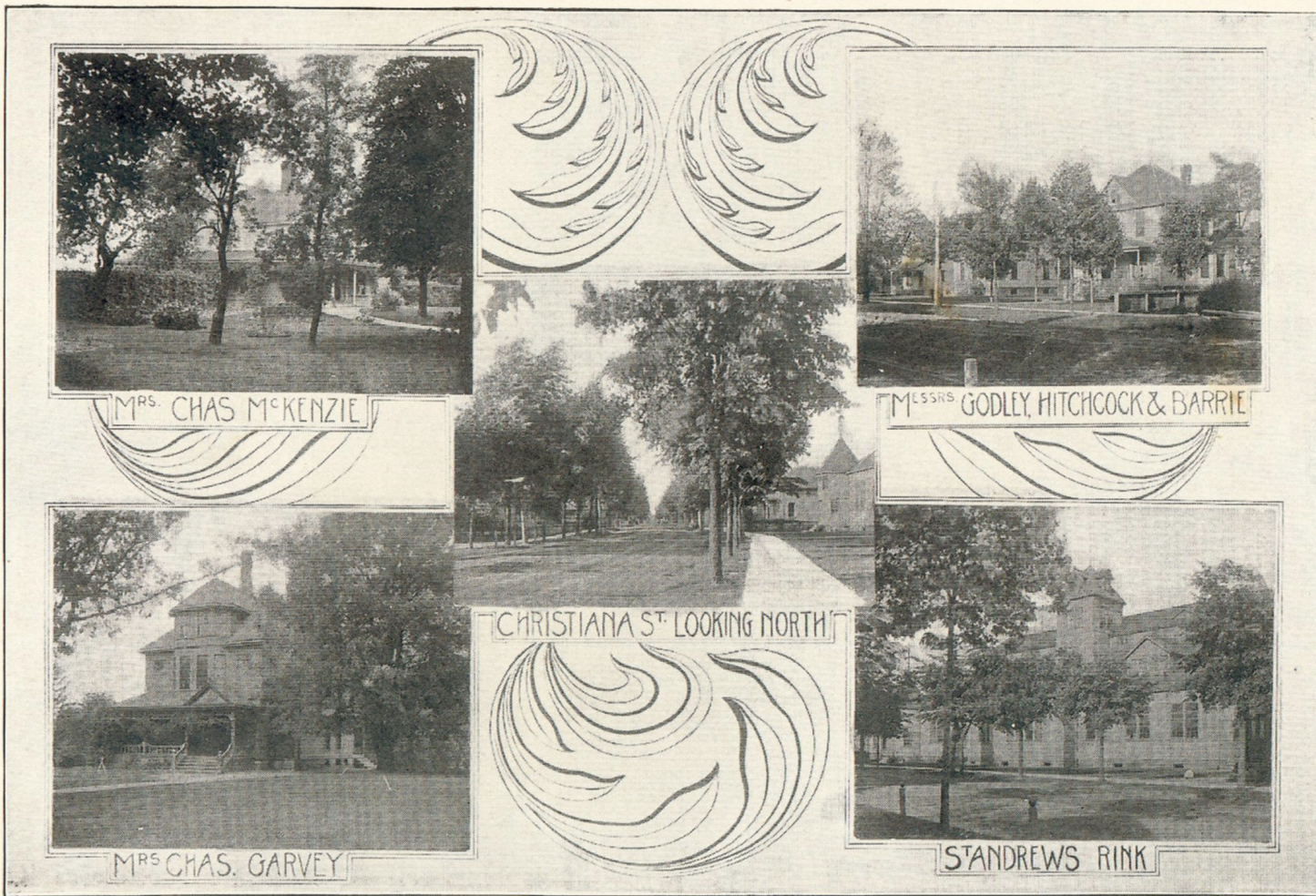
THE PRINCIPAL SCHOOLS



FRONT ST TO-DAY

TUNNEL DEPOT

FRONT ST FROM VENDOME
A THING OF THE PAST.



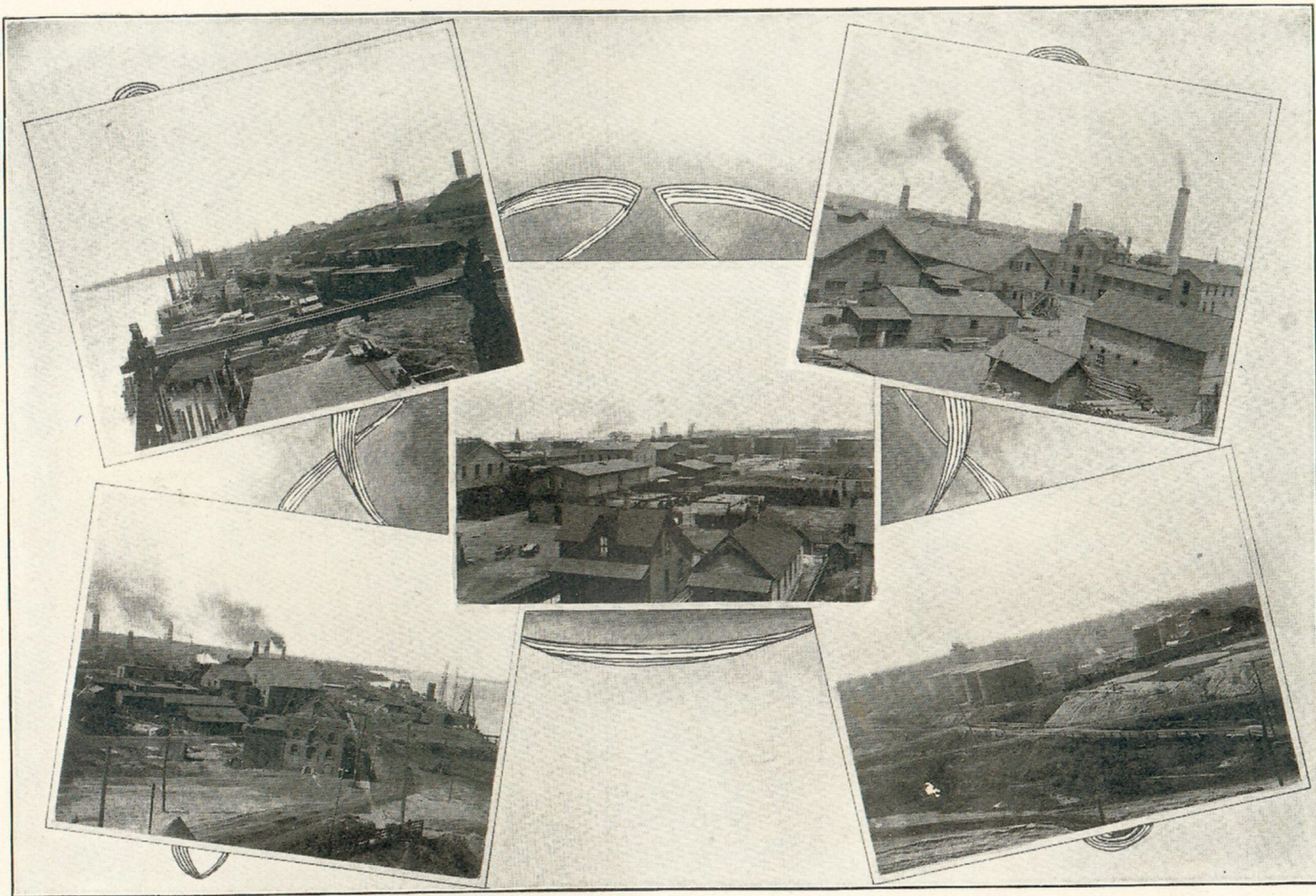
VIEWS OF CHRISTIANA STREET



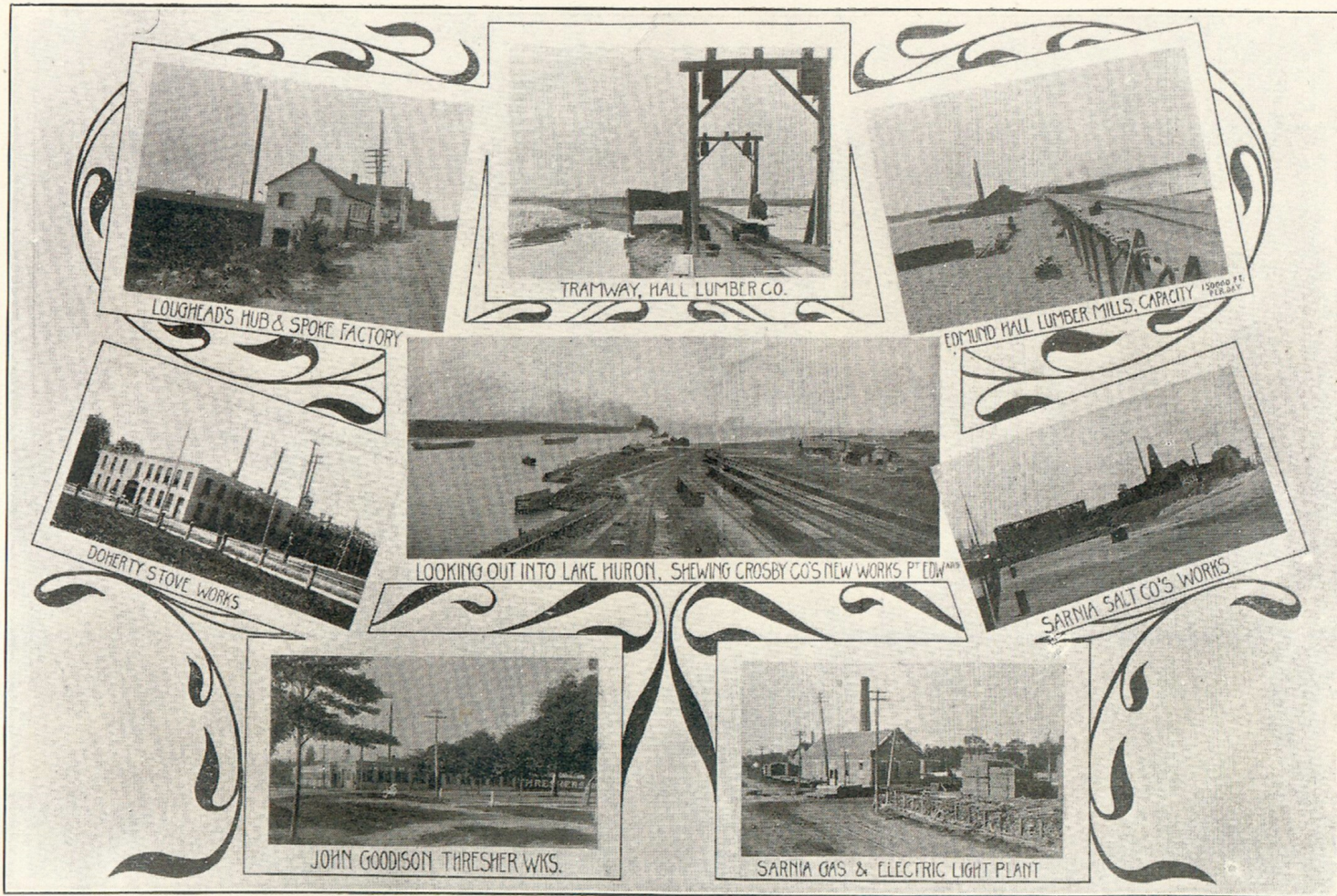
VIEWS OF EMERIC STREET



VIDEVS OF VIDAL STREET



IMPERIAL OIL REFINERIES



LOUGHEAD'S HUB & SPOKE FACTORY

TRAMWAY, HALL LUMBER CO.

EDMUND HALL LUMBER MILLS, CAPACITY 150,000 FT. PER DAY

DOHERTY STOVE WORKS

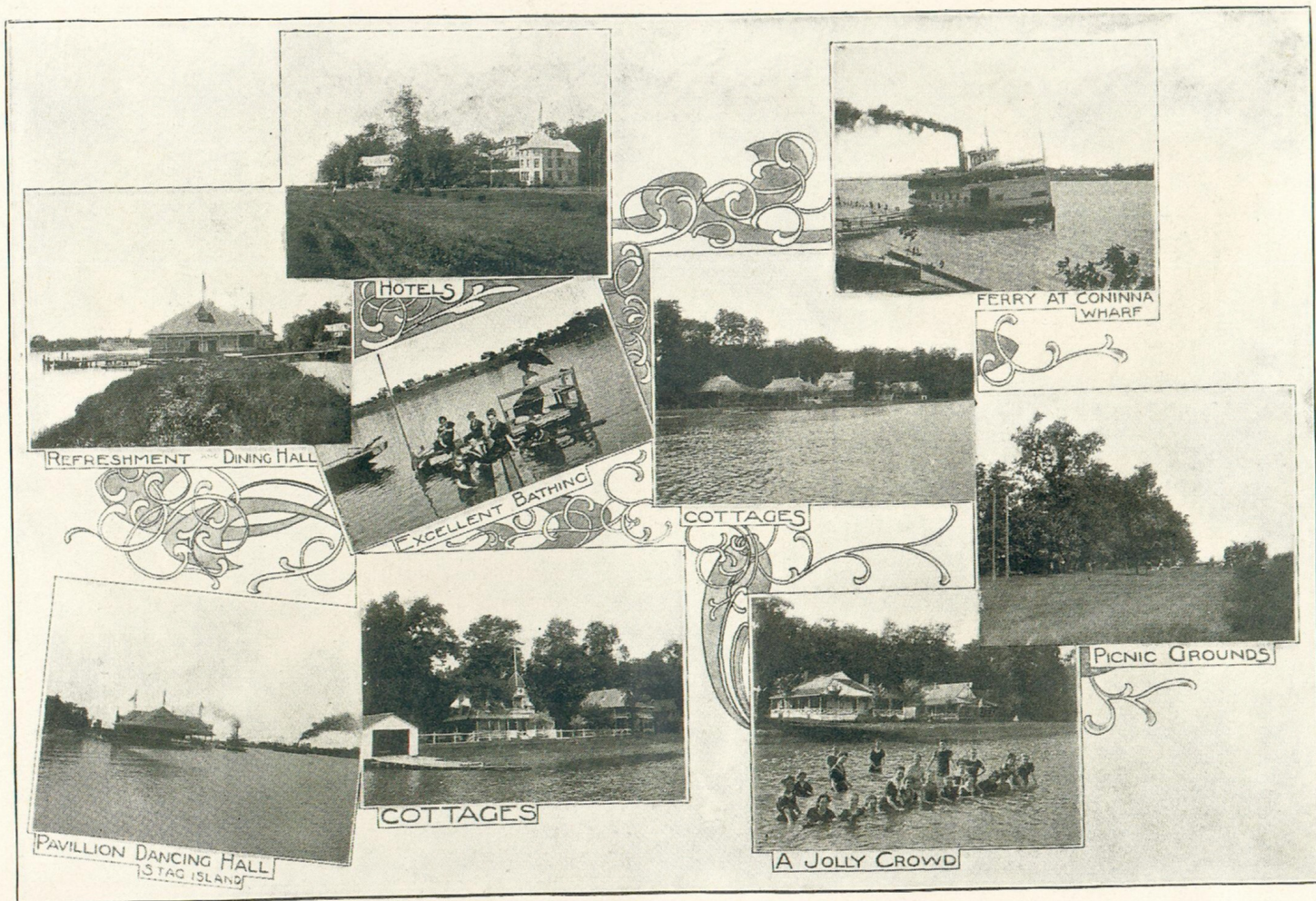
LOOKING OUT INTO LAKE HURON, SHEWING CROSBY CO'S NEW WORKS P' EDW.

SARNIA SALT CO'S WORKS

JOHN GOODISON THRESHER WKS.

SARNIA GAS & ELECTRIC LIGHT PLANT

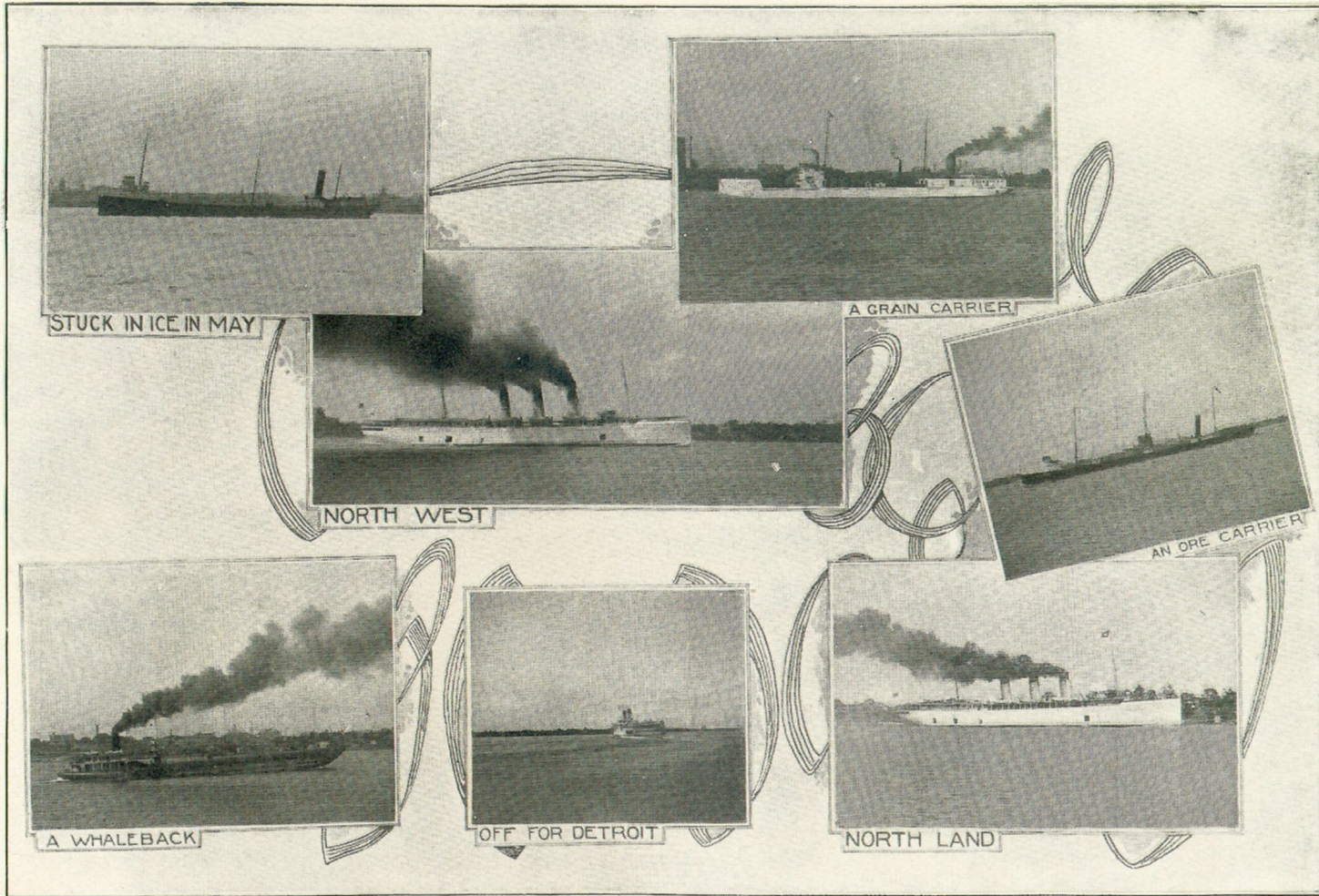
SOME PRINCIPAL INDUSTRIES



GLIMPSES OF STAG ISLAND



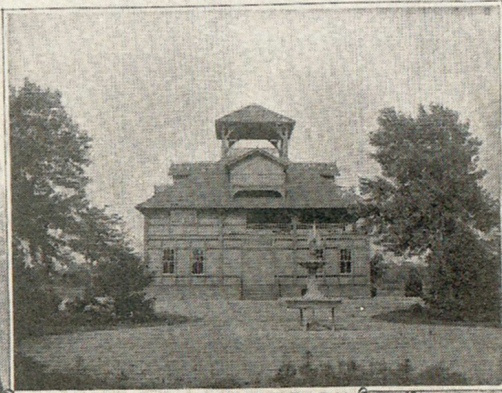
SOME RESIDENCES



AS SEEN FROM WHARVES EVERY DAY



ONE OF THE WALKS
BAY VIEW PARK



CASINO IN BAY VIEW PARK

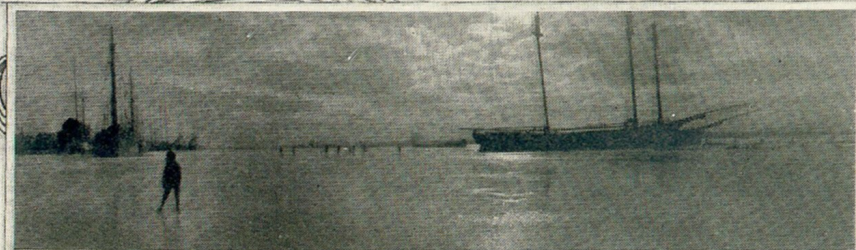


VICTORIA PARK

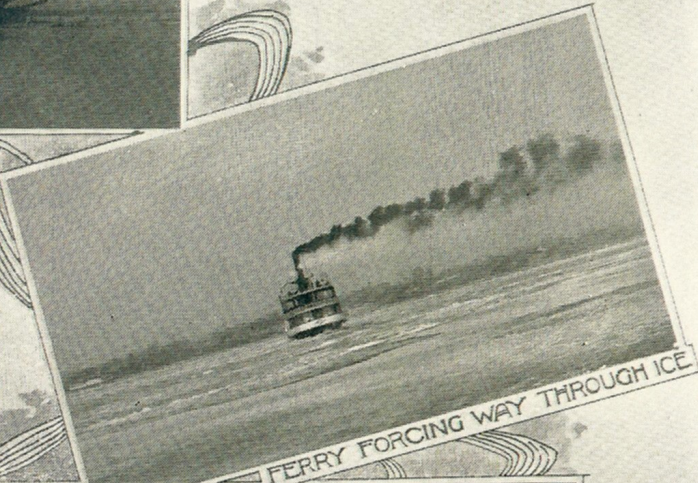


DUCK SHOOTING IN MARSH
BAY VIEW PARK

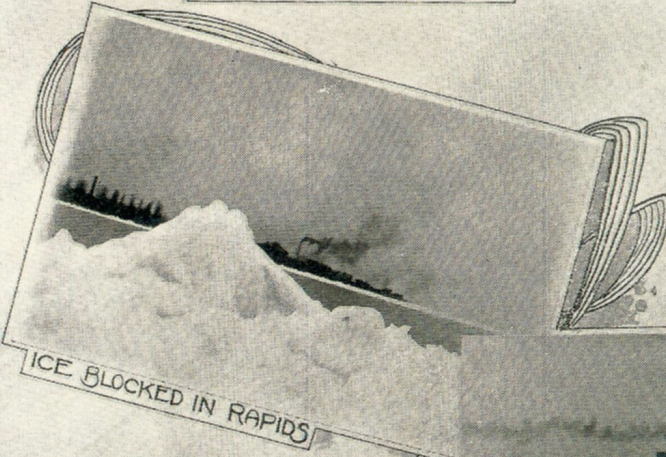
SOME OF THE PARKS



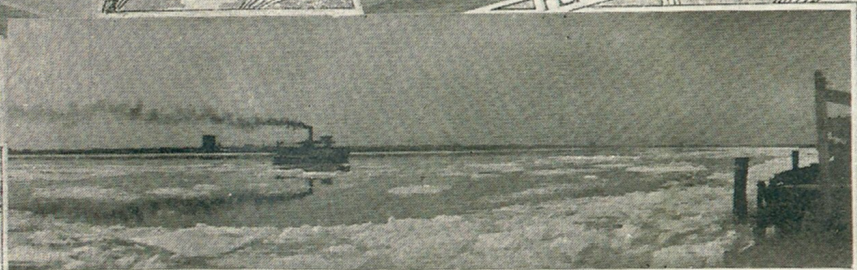
SARNIA BAY IN WINTER



FERRY FORCING WAY THROUGH ICE

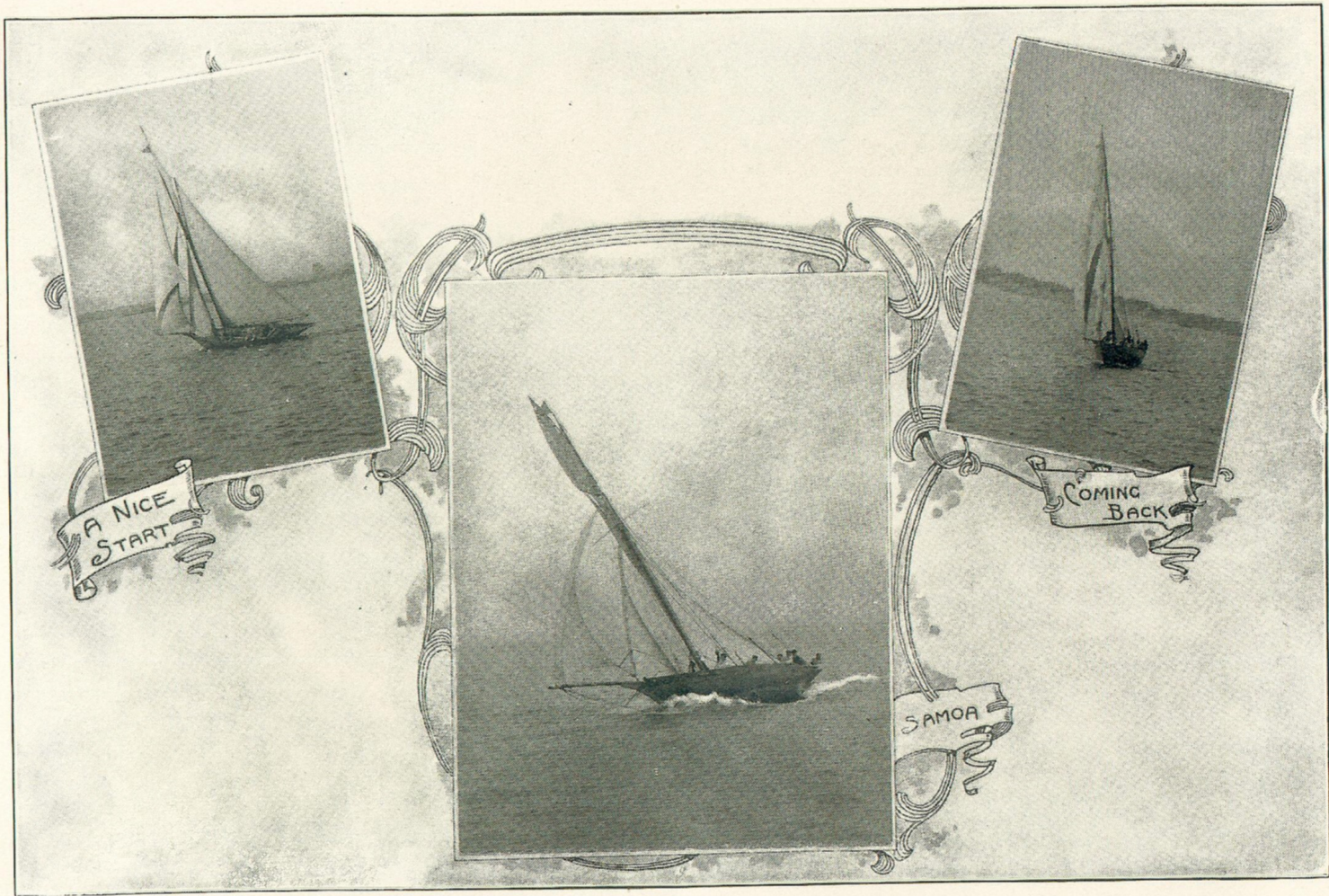


ICE BLOCKED IN RAPIDS



ICE FLOW IN RIVER S^T CLAIR

SOME WINTER SCENES



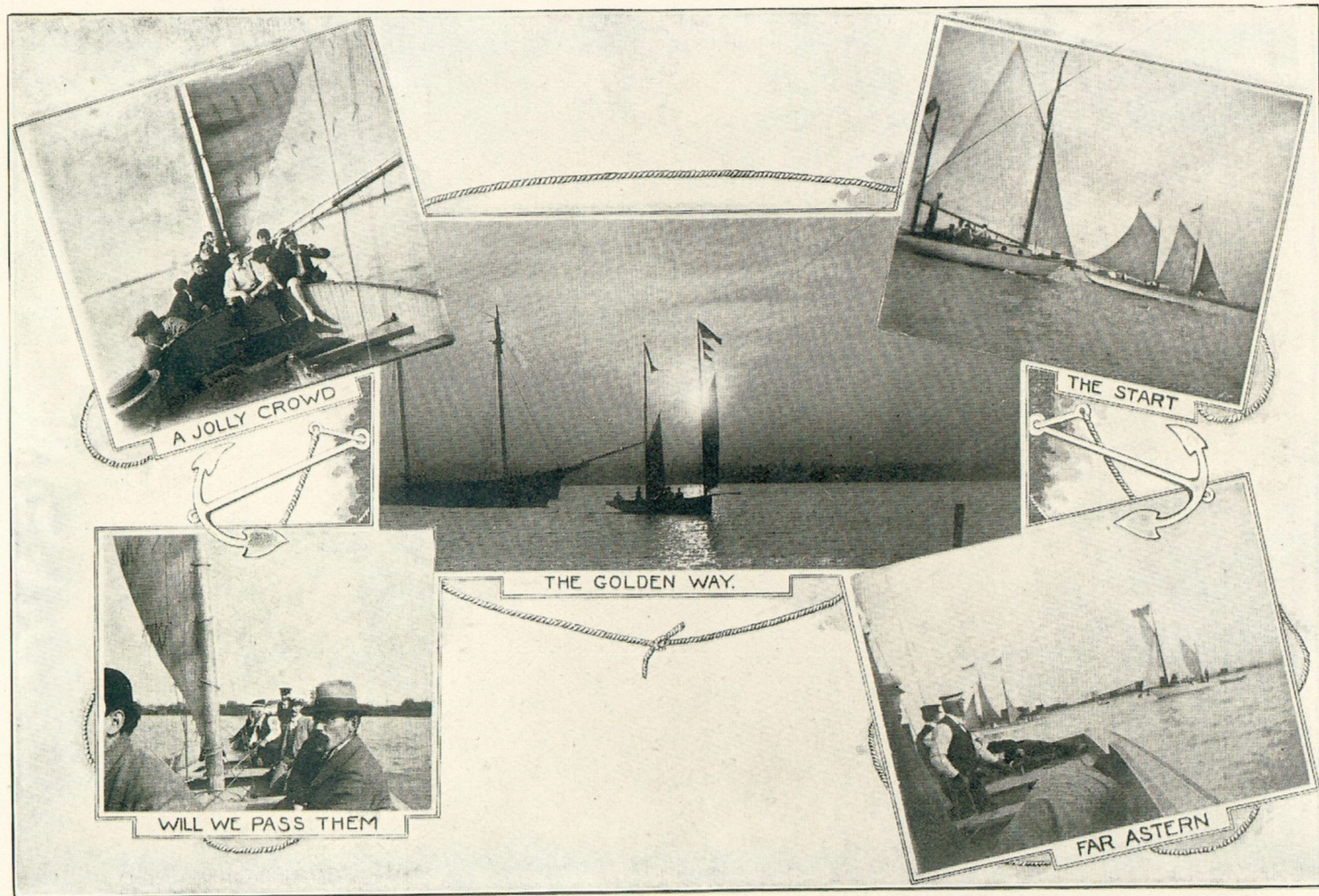
SAILING SCENES



THE TAKING OF PRETORIA
CELEBRATION



AN OUTING TO TASHMOO PARK



A JOLLY CROWD

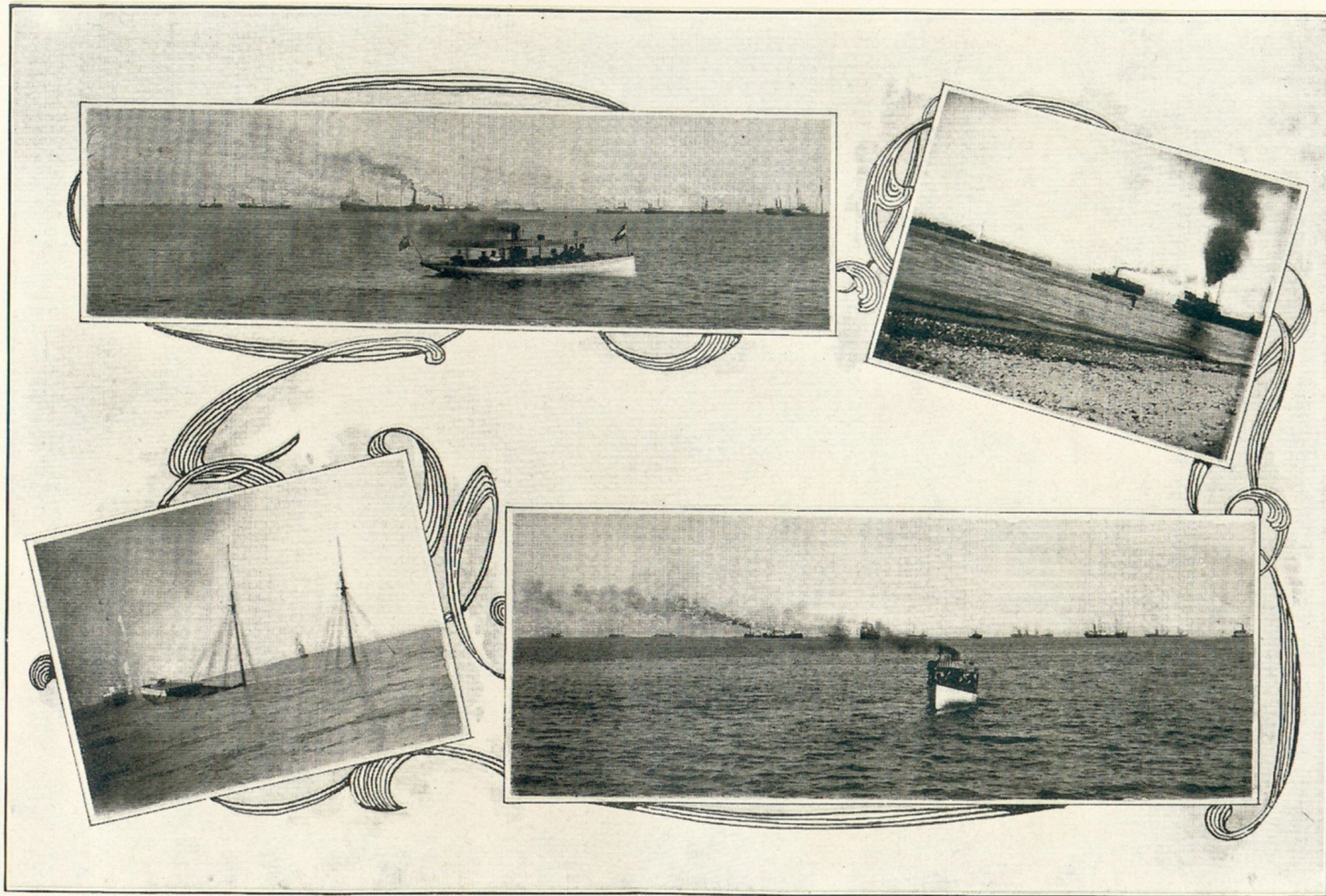
THE START

THE GOLDEN WAY.

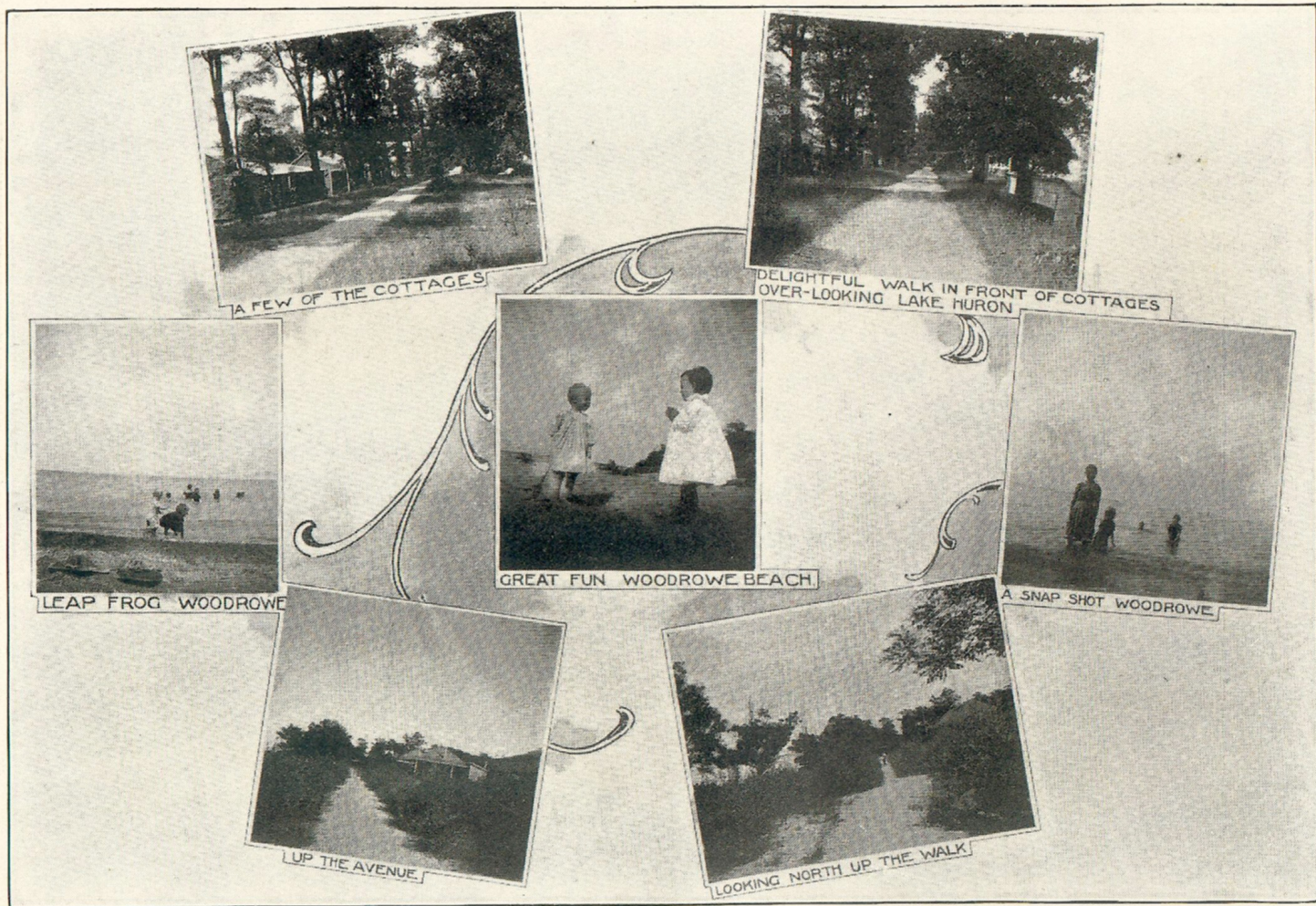
WILL WE PASS THEM

FAR ASTERN

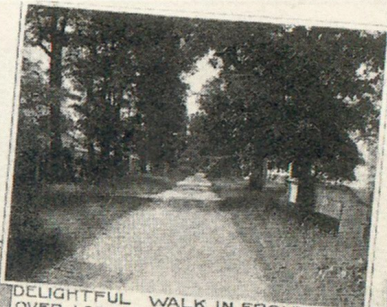
SOME BOATING SCENES



A REMINISCENCE OF THE BLOCKADE



A FEW OF THE COTTAGES



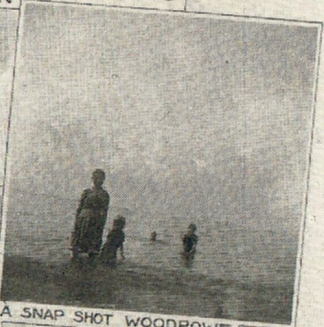
DELIGHTFUL WALK IN FRONT OF COTTAGES
OVER-LOOKING LAKE HURON



LEAP FROG WOODROWE



GREAT FUN WOODROWE BEACH



A SNAP SHOT WOODROWE



UP THE AVENUE

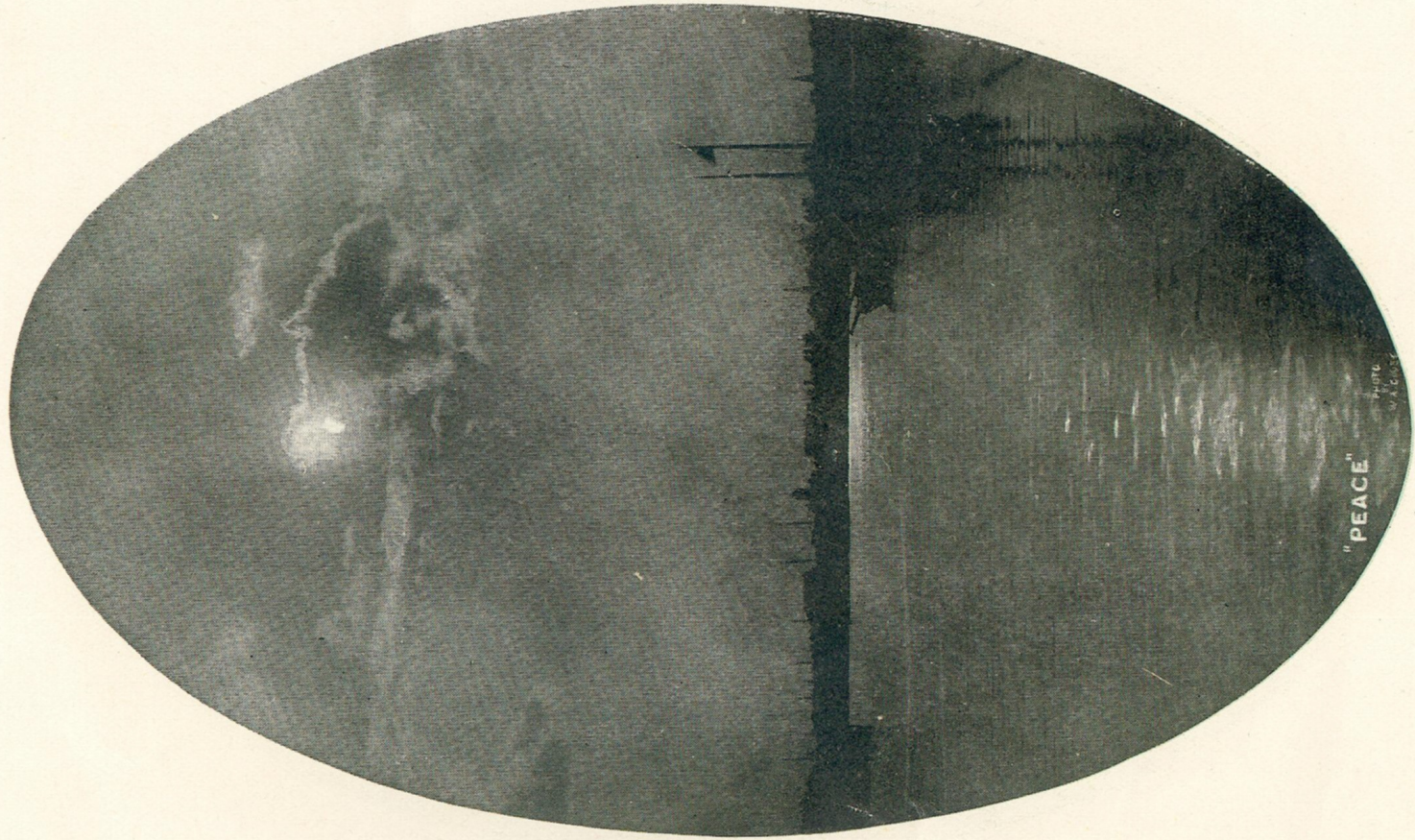


LOOKING NORTH UP THE WALK

WOODROWE BEACH

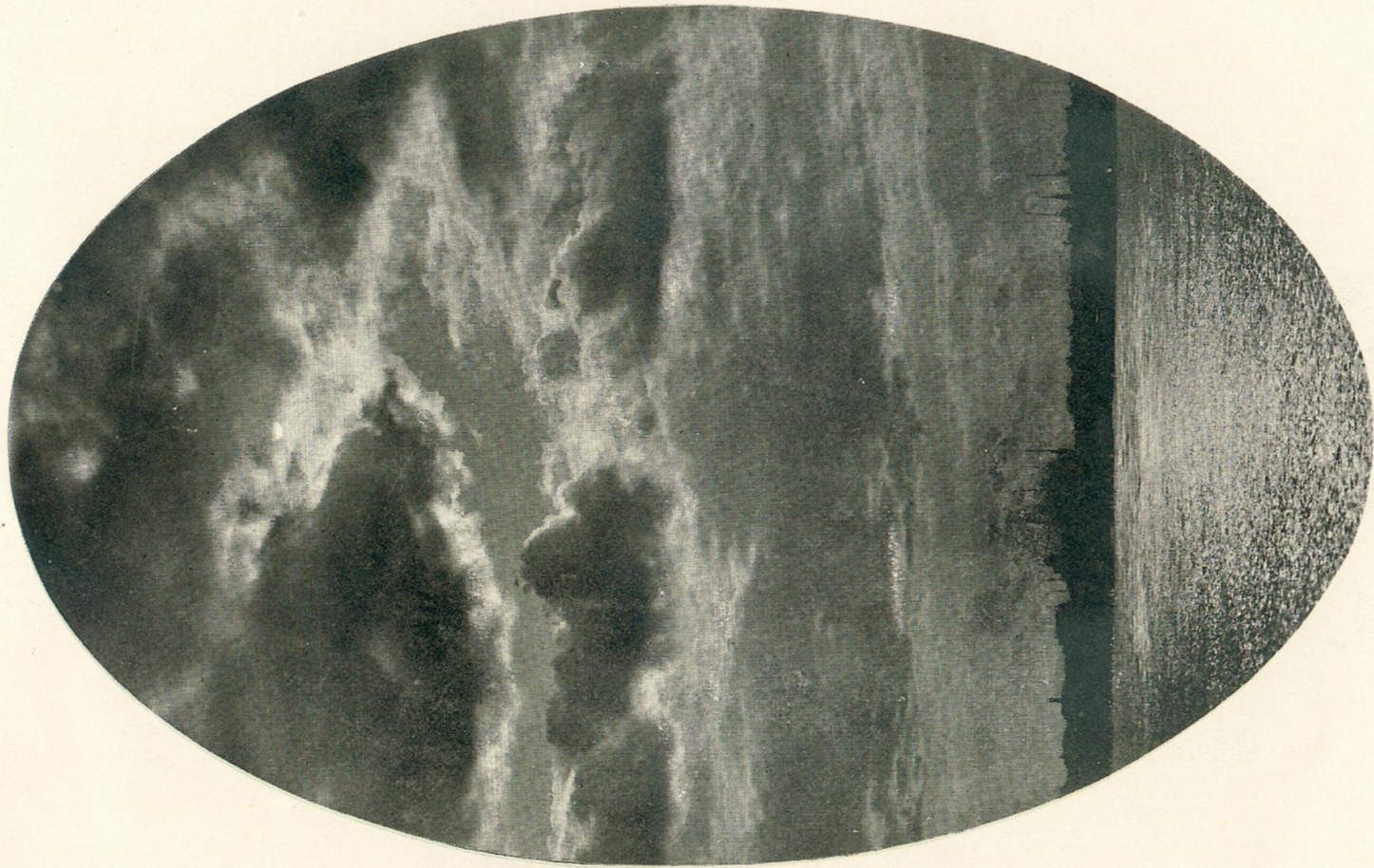


SOME OF OUR BEAUTIFUL SUNSETS

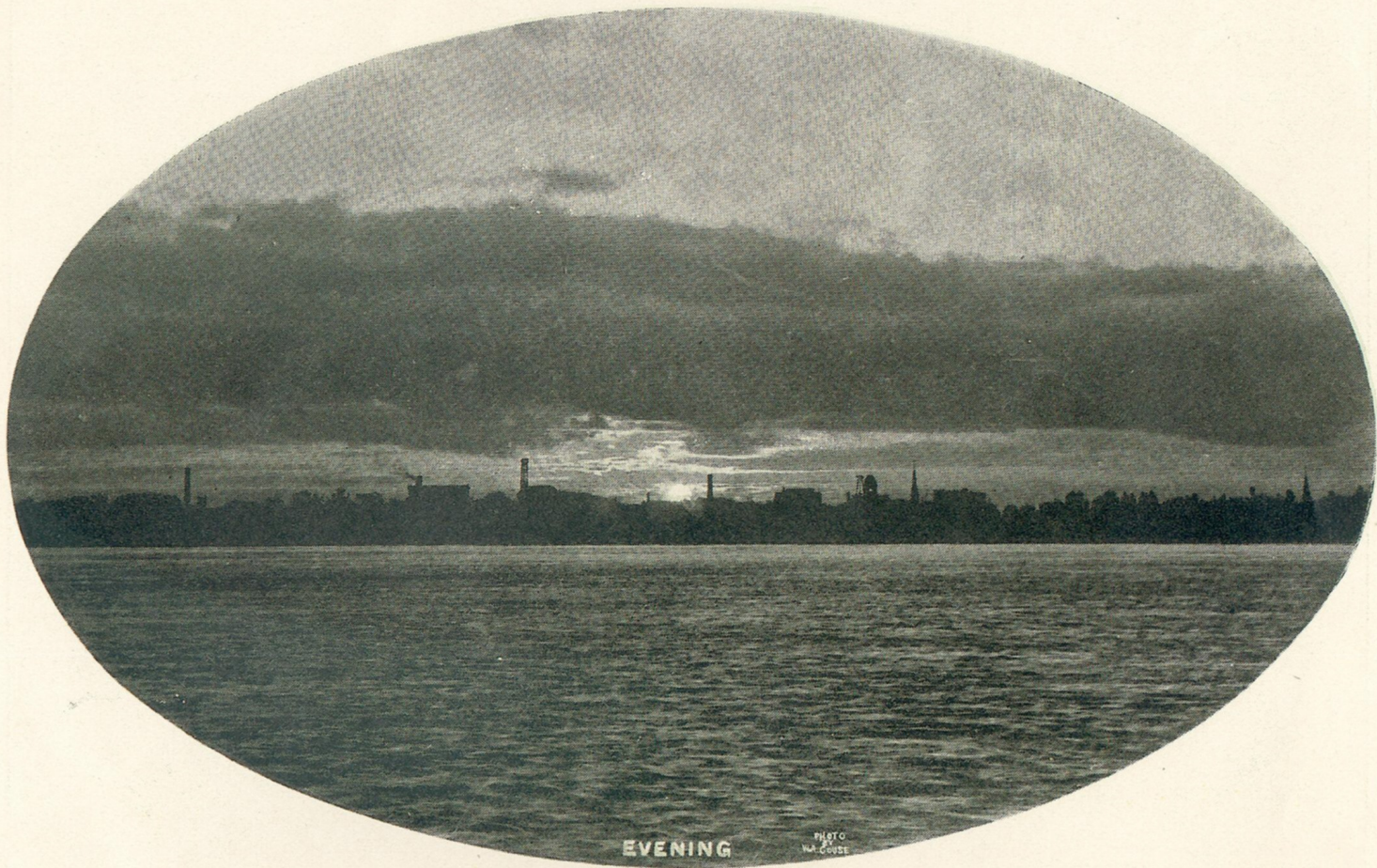


"PEACE"
PHOTO
W.A.G. 1915

"PEACE"



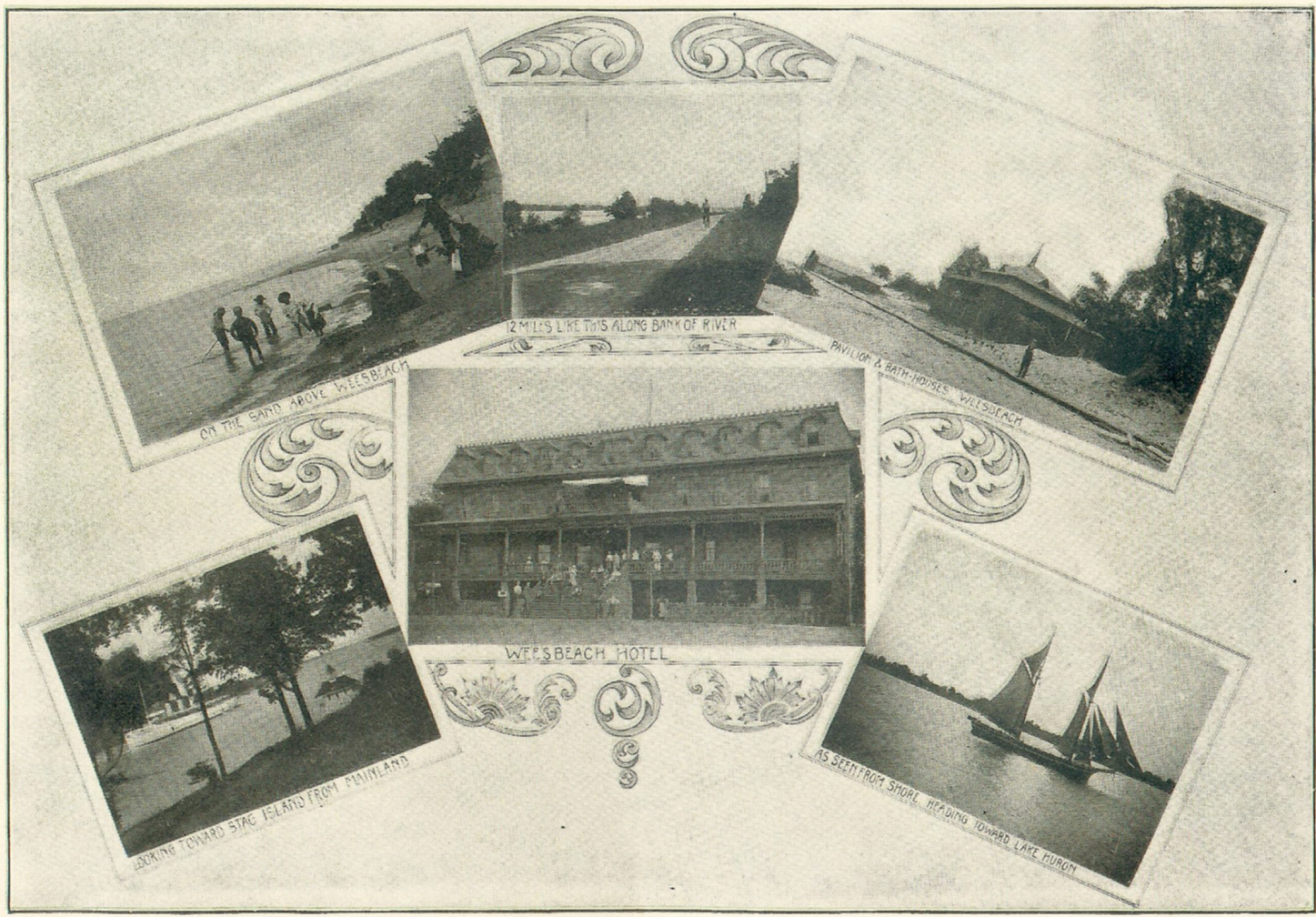
EVERY CLOUD HAS A SILVER LINING



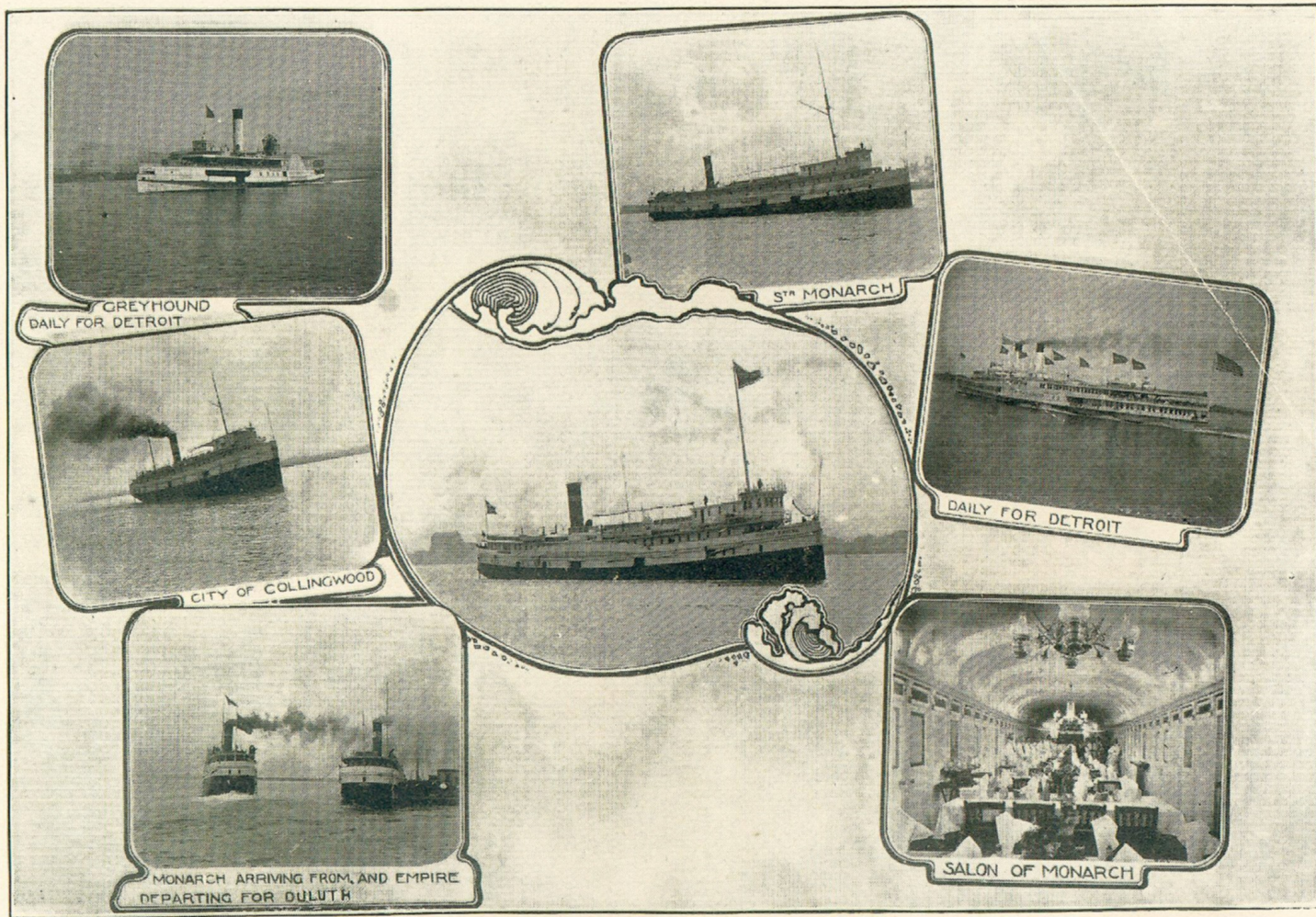
EVENING

PHOTO
BY
W.A. COOPER

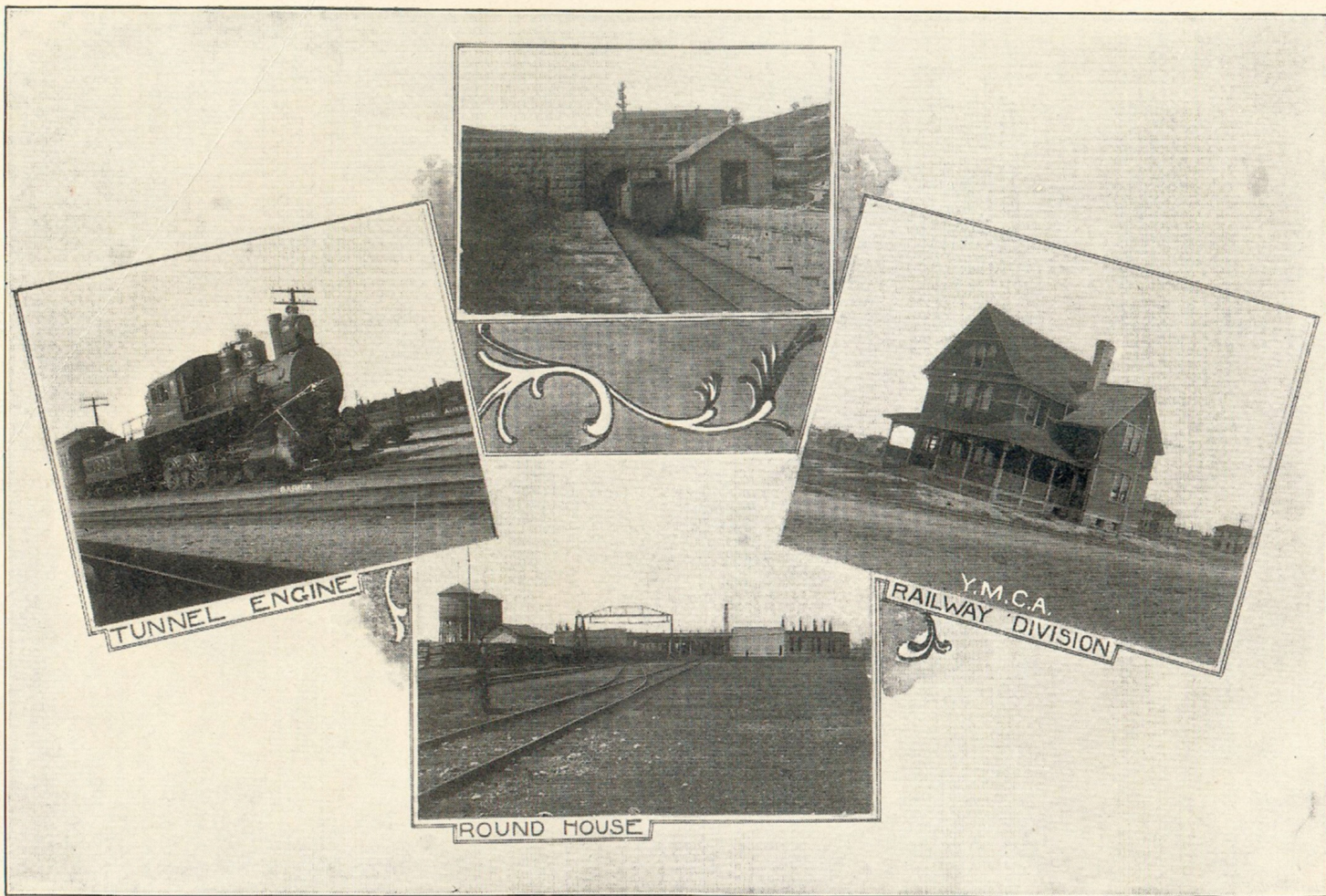
EVENING



SCENES ALONG BEACHES



GROUP OF BEATTY AND DETROIT BOATS



AROUND SARNIA TUNNEL

